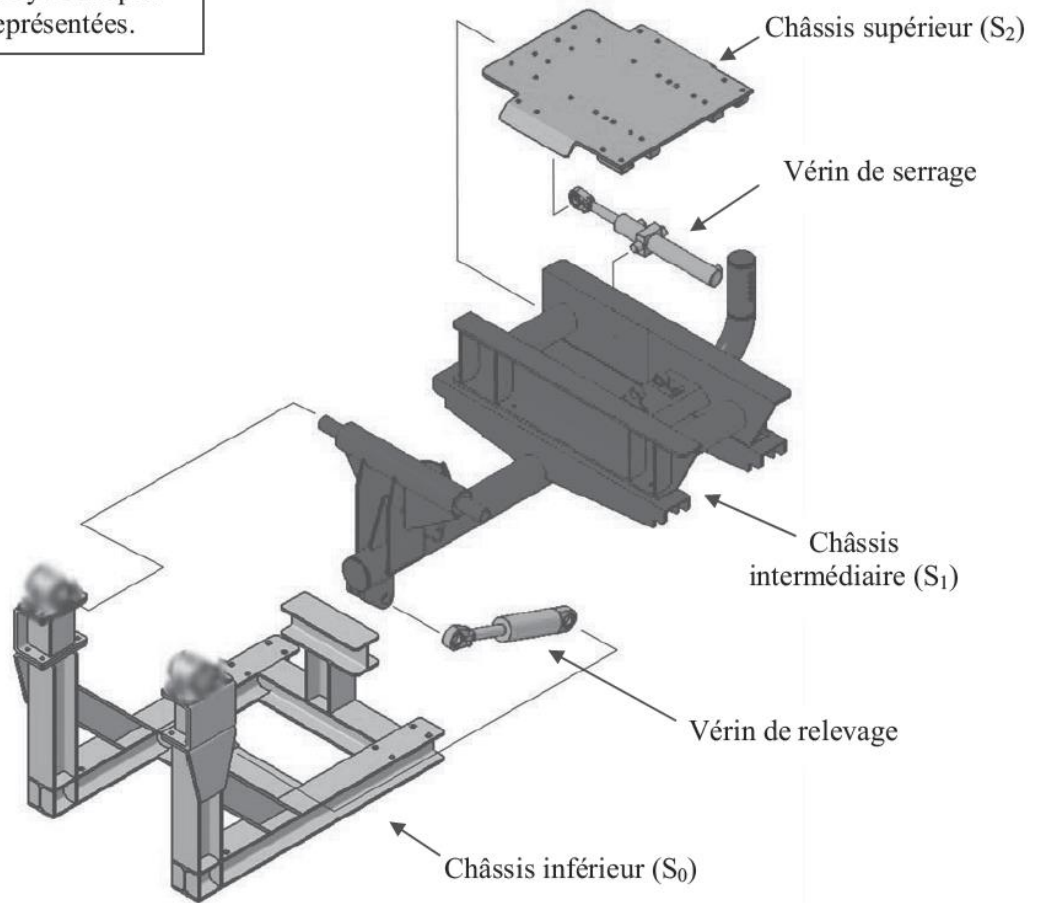


Remarque :

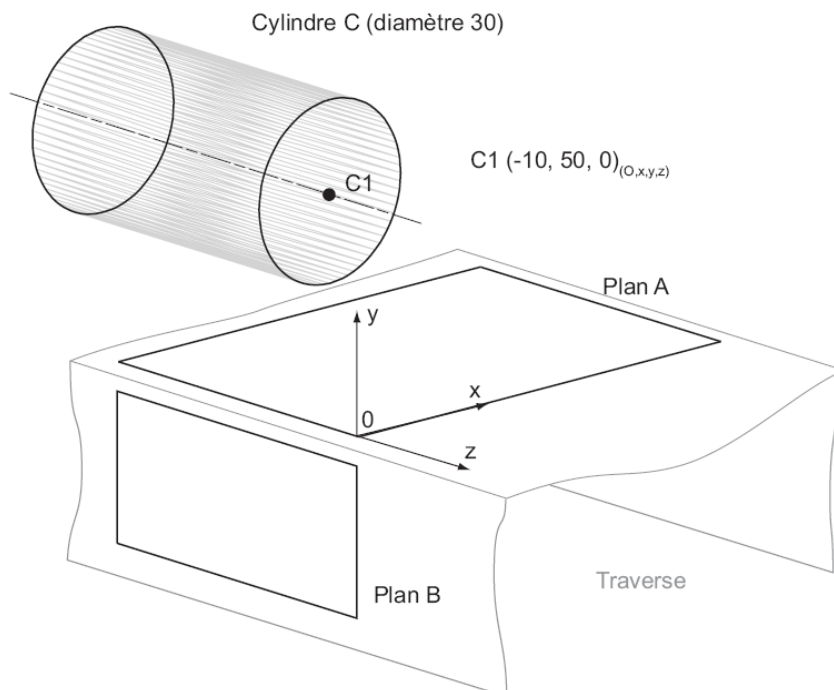
Les chenilles ainsi que les motorisations hydrauliques ne sont pas représentées.



Châssis de la MTL - Vue éclatée

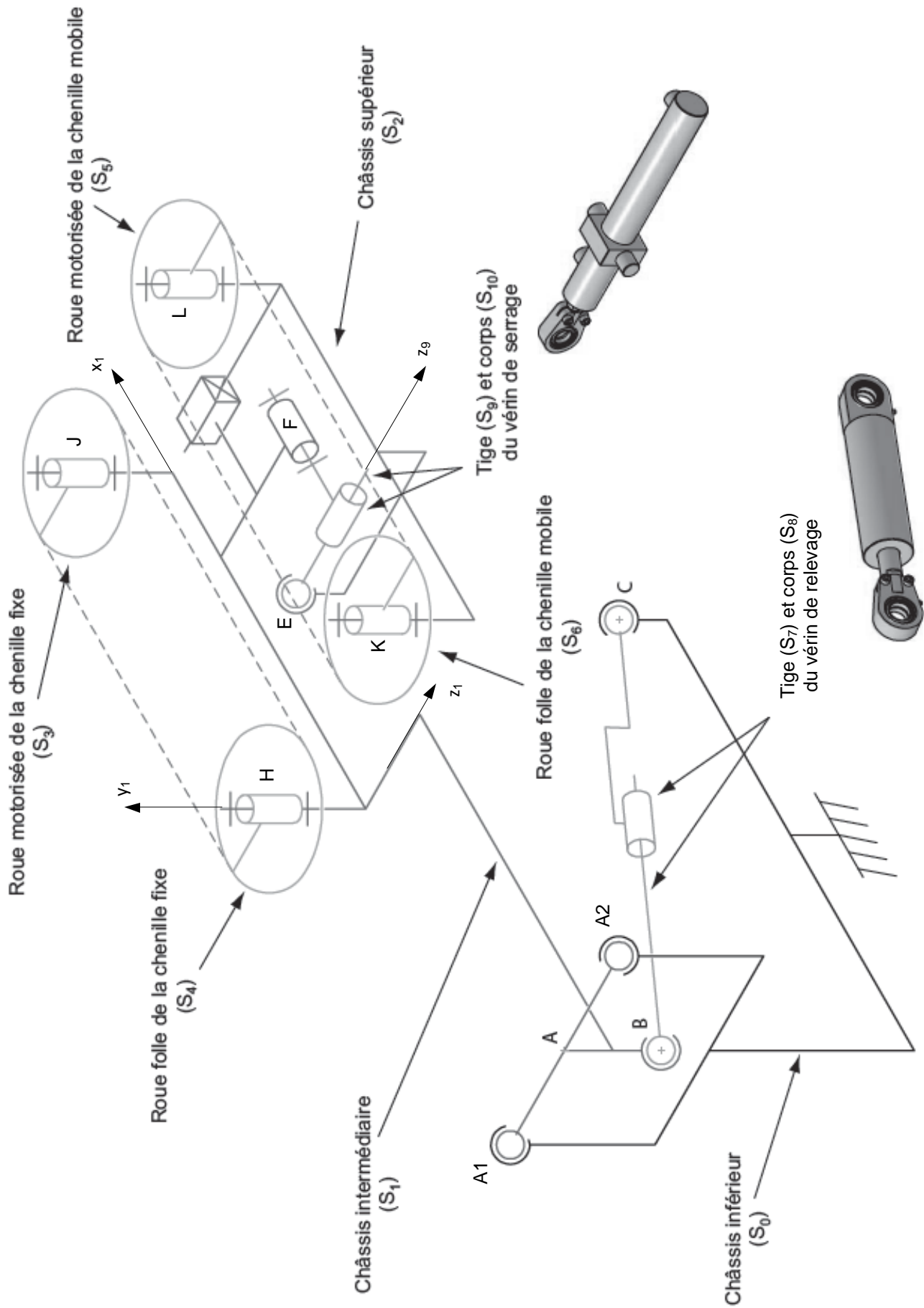
DOCUMENT RESSOURCE II

Caractéristiques fonctionnelles de la pièce support



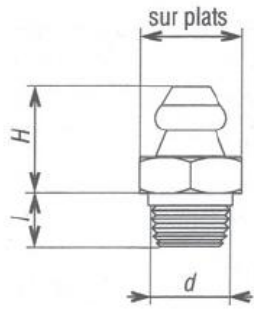
DOCUMENT RESSOURCE V

Schéma de principe de la MTL



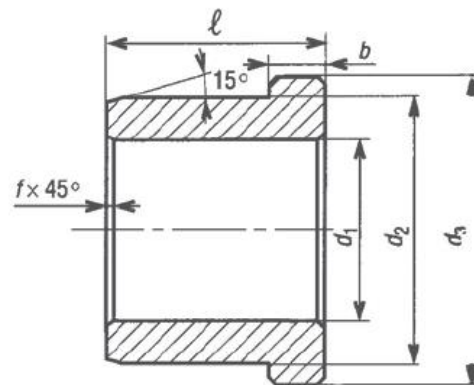
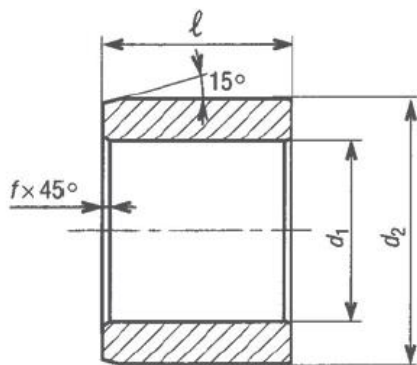
DOCUMENT RESSOURCE III

Graisseur



$d \times \text{pas}$	M6×1	M6×1	M7×1	M8×1 M8×1.25	M10×1 M10×1.5	M12×1.75
sur plats (mm)	7	7	8	10	11	14
l (mm)	3	5	5	5	5 - 7	7
h (mm)	10.3	10	10	10	10	11

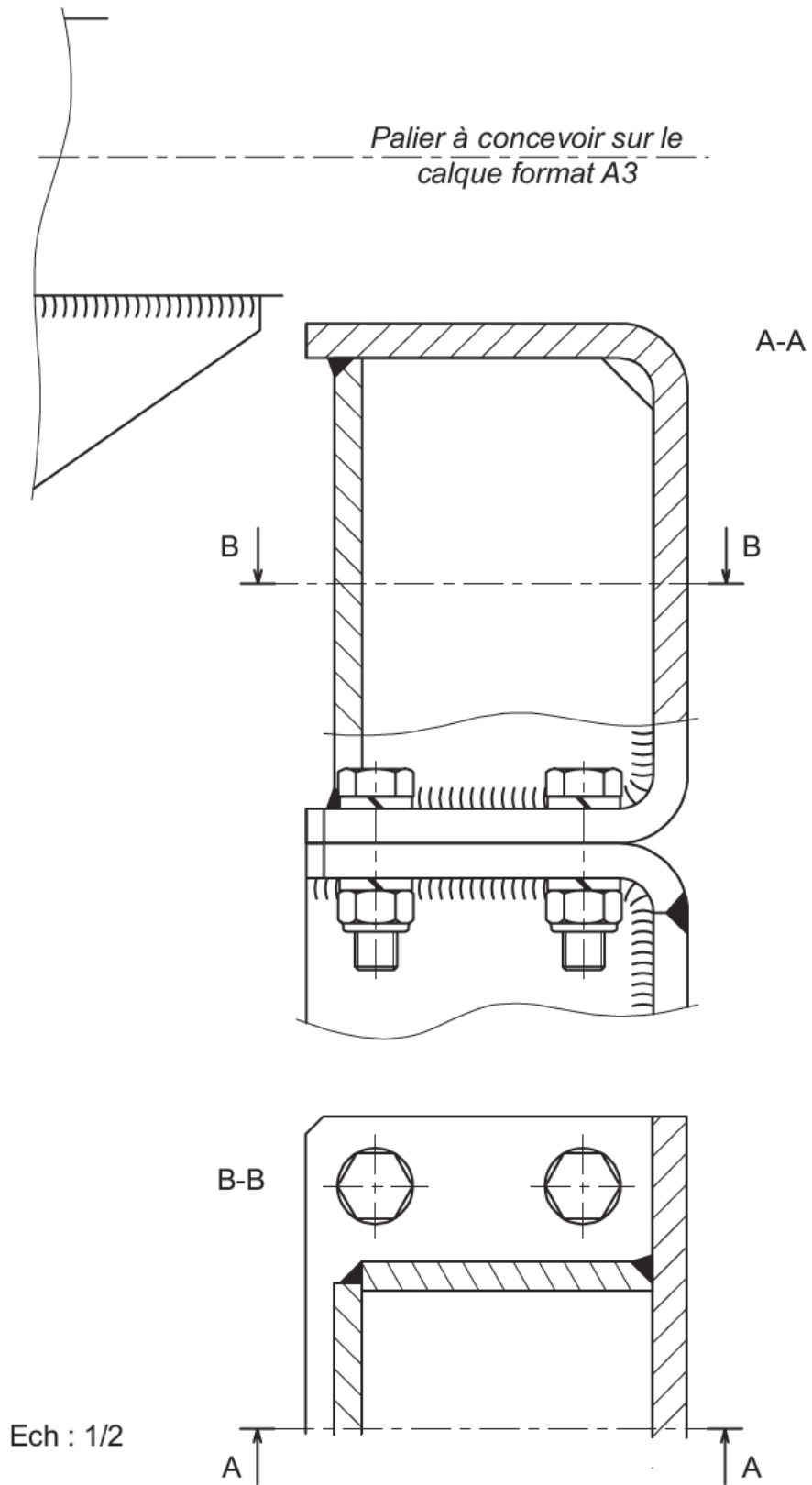
Coussinet en bronze



d_1 (mm)	10	12	14	16	18	20	22	25	28	32	36	40	45	50	
d_2 (mm)	16	18	20	22	24	26	28	32	36	40	46	50	55	60	
d_3 (mm)	20	22	25	28	30	32	34	38	42	46	52	58	63	68	
l (mm)	6	10	12	12	15	15	20	20	20	30	30	40	40	50	
b (mm)	3							4			5				
f (mm)	0.3			0.4				0.6					0.8		

Pression spécifique : $p = 80 \text{ MPa}$

Montant vertical châssis inférieur



DOCUMENT RESSOURCE VIII